

LINCOLN SERIES

A graphic of four light blue water droplets of varying sizes, arranged in a cluster to the right of the word 'SERIES'.

TRUCK WASH EQUIPMENT

D.A. LINCOLN
PUMP SERVICE & SUPPLY
CAR & TRUCK WASH EXPERTS

A graphic of three light blue water droplets of varying sizes, arranged in a small cluster above the company name.

LINCOLN SERIES



The Lincoln Series Equipment line covers a full range for the Self Serve Industry. Our customized industrial grade car/truck wash equipment offers standard systems for 1 to 12 bays, which can be expanded to fit any wash requirement. We use proven components to provide ultimate quality and reliability for years of trouble free operation.

The Lincoln Series Wash Equipment is designed with only one criteria:
Make it the best self serve wash system possible

D.A. LINCOLN
PUMP SERVICE & SUPPLY
CAR & TRUCK WASH EXPERTS



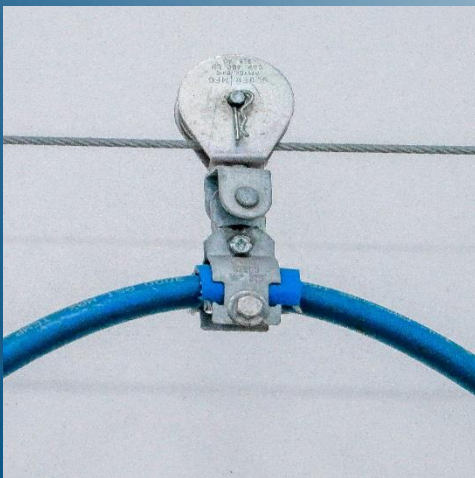
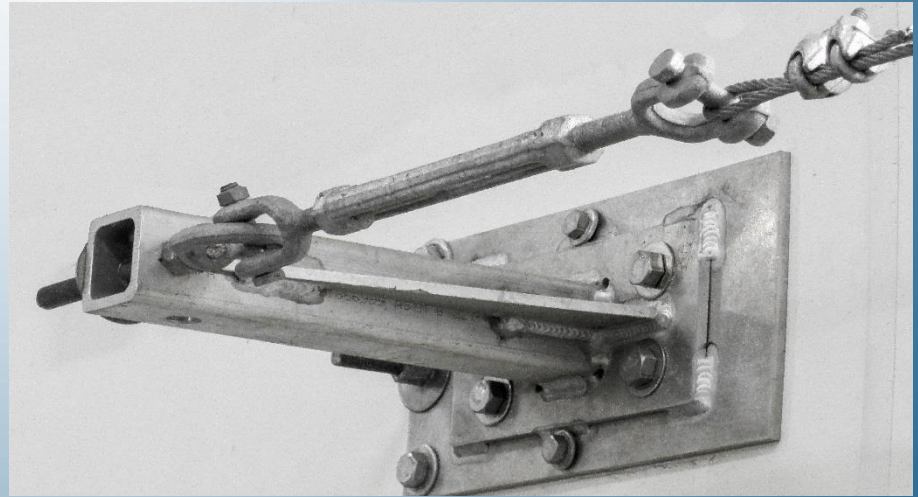
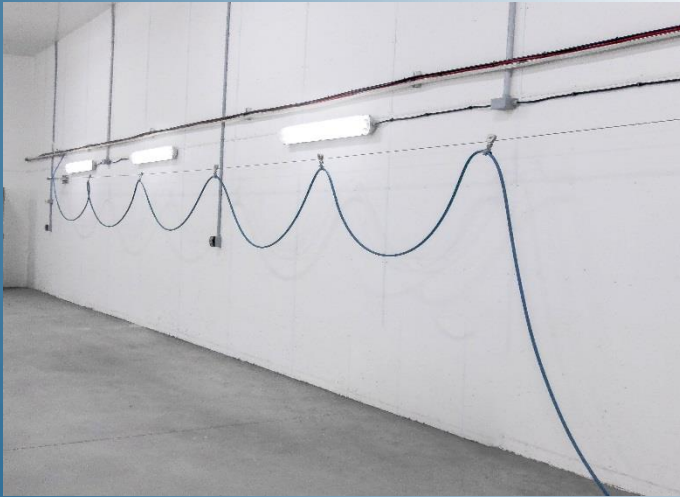
LINCOLN SERIES

TRUCK WASH LAYOUT



LINCOLN SERIES

CABLE SYSTEM



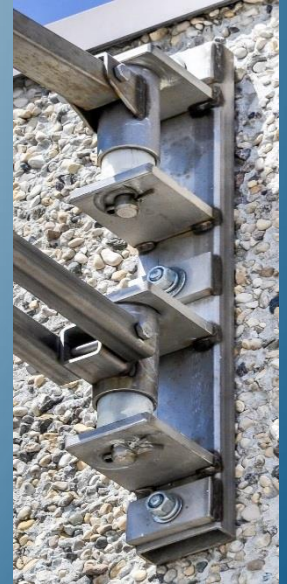
- Heavy duty 3/16 stainless steel cable
- Heavy duty custom aluminum brackets to accommodate bay size
- Heavy duty cable/hose rollers with swivel
- Adjustable turn buckles for cable tension

LINCOLN SERIES

360°/180° STAINLESS STEEL COMBINATION BOOM



- Stainless steel fabricated
- 10 foot 180° radius
- 7 foot 360° radius
- Total boom coverage of 34 feet
- Long lasting nylon bearings
- No grease points



LINCOLN SERIES

MAT CLAMPS



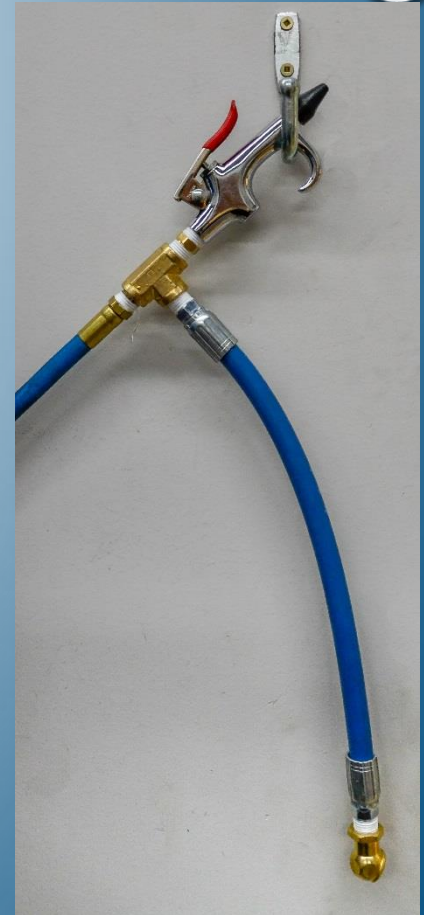
- Stainless steel fabricated
- Spring loaded
- Durable

LINCOLN SERIES

IN BAY EQUIPMENT



- Aluminum foam brush head with soft bristles, 6' aluminum handle with 3/8" swivel
- Durable shut off or weep HP gun with stainless steel wand and 3/8" HP swivel
- Durable air gun with scratch protector equipped with tire air chuck



LINCOLN SERIES

IN BAY EQUIPMENT HANGERS



- Stainless steel fabricated
- Durable
- Vacuum hose hanger
- Foam brush hanger

LINCOLN SERIES

IN BAY VACUUM SYSTEM



- 120 VAC/13amp vac motor
- Removable bucket for easy cleaning
- Durable housing
- No filter bags required
- Optional claws and swivels
- 1 1/2 " durable vac hose
- One central vacuum system available











LINCOLN SERIES

INSTRUCTION SIGN

WASHING INSTRUCTIONS

WARNING
CAUTION

HIGH PRESSURE GRASP WAND FIRMLY
IN HAND BEFORE USING.
FLOOR MAY BE SLIPPERY WHEN WET

VACUUM		Turn selector knob to VACUUM . Remove excess litter from vehicle. DRY VACUUM ONLY!
TIRE CLEANER		Turn selector knob to TIRE CLEANER . Soak dry tires with low pressure chemical then rinse.
ENGINE CLEANER		Turn selector knob to ENGINE CLEANER . Soak engine with low pressure chemical then rinse.
BUG PREP		Turn selector knob to BUG PREP . Apply low pressure chemical to surface area with bugs before soap application.
SOAP		Turn selector knob to SOAP . Wash vehicle with high pressure soap from bottom up.
FOAM BRUSH		Check brush for cleanliness. Turn selector knob to FOAM BRUSH . Use brush gently. Scrub entire vehicle. Return brush to holder.
HOT RINSE		Turn selector knob to HOT RINSE . Rinse from top to bottom.
TURTLE WAX		Turn selector knob to TURTLE WAX . Apply to entire vehicle. Rinse off excess wax.
SPOT FREE RINSE		Turn selector knob to SPOT FREE RINSE . Apply low pressure spot free rinse to entire vehicle as last application.
AIR		Turn selector knob to AIR . Blow excess water from doors and locks to avoid freezing. Use air chuck to inflate tires.

Thank You for your business
PLEASE COME AGAIN!
D.A. LINCOLN PUMP SERVICE and SUPPLY
WINNIPEG, MANITOBA
WWW.DALINCOLN.COM

- Graphic Lexan Wash Instruction Sign
- Customizable to customer options
- Durable and easy to follow
- Can include customer logo/name

LINCOLN SERIES

PAYMENT OPTIONS



- All stainless steel housings
- Exacta Bay Master Junior and Bay Master Retro
- Central located receipt printer
- Credit cards, Gift cards, Fleet accounts
- User friendly interface
- Loonies, Toonies and Tokens
- Theft proof Coin Box, reliable acceptor
- Custom decals
- 8 Position, 10 Position and 12 Position
- Push button selection available

LINCOLN SERIES

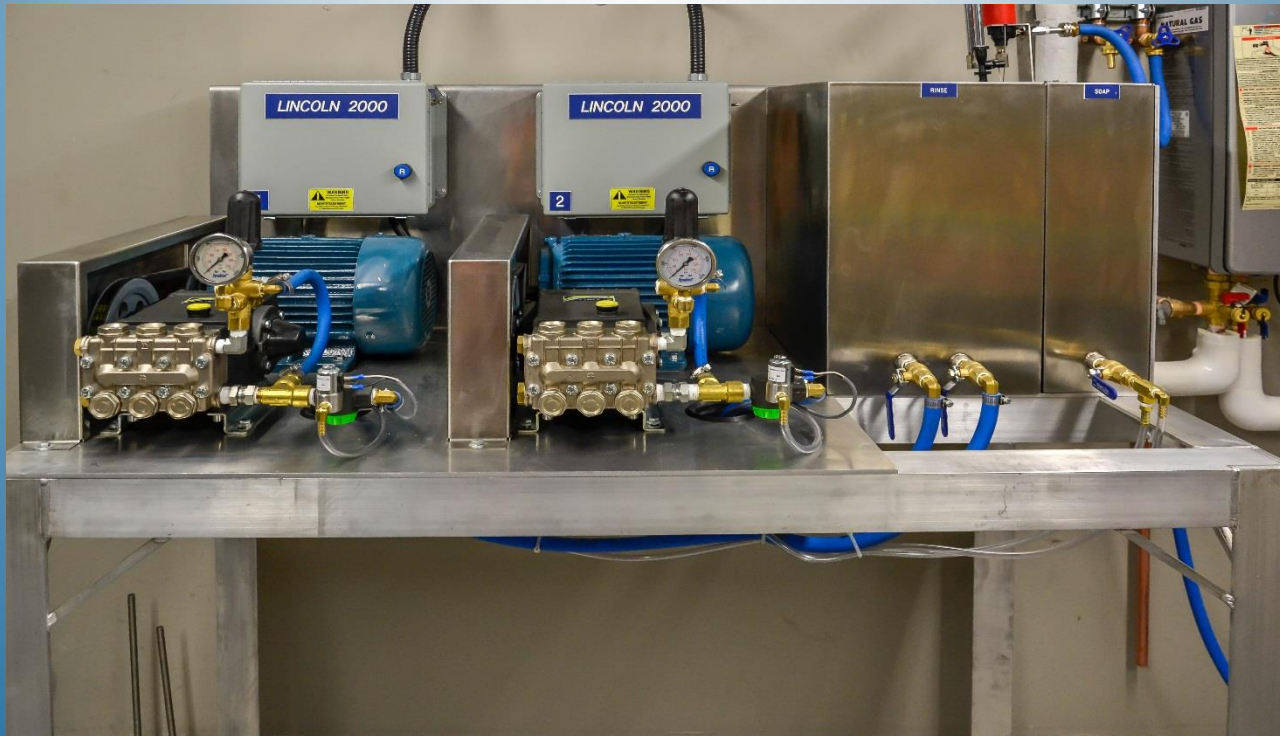
REMOTE SWITCH BOX



- Waterproof PVC box
- Custom decals
- Green indicator light
- Push to start button
- 8 to 12 position switch

LINCOLN SERIES

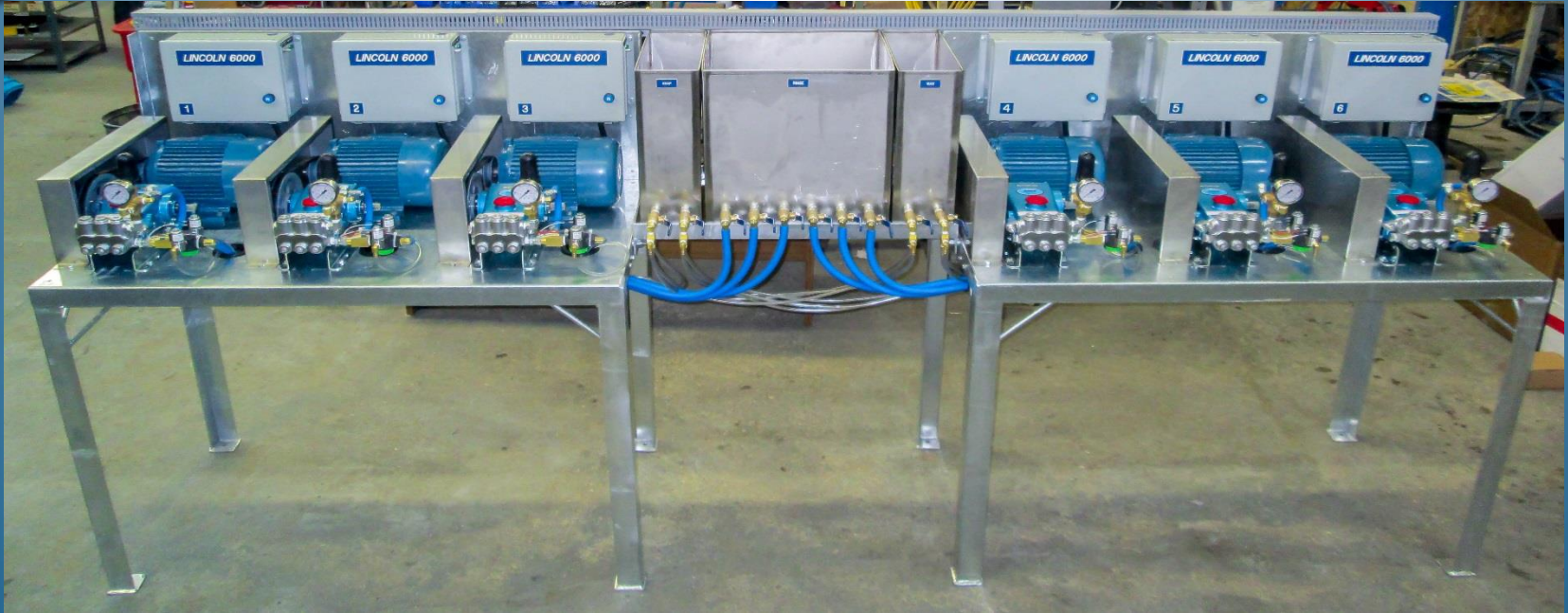
PUMP STAND



- Sturdy, heavy duty aluminum frame
- Built according to number of bays
- Service friendly and long lasting

LINCOLN SERIES

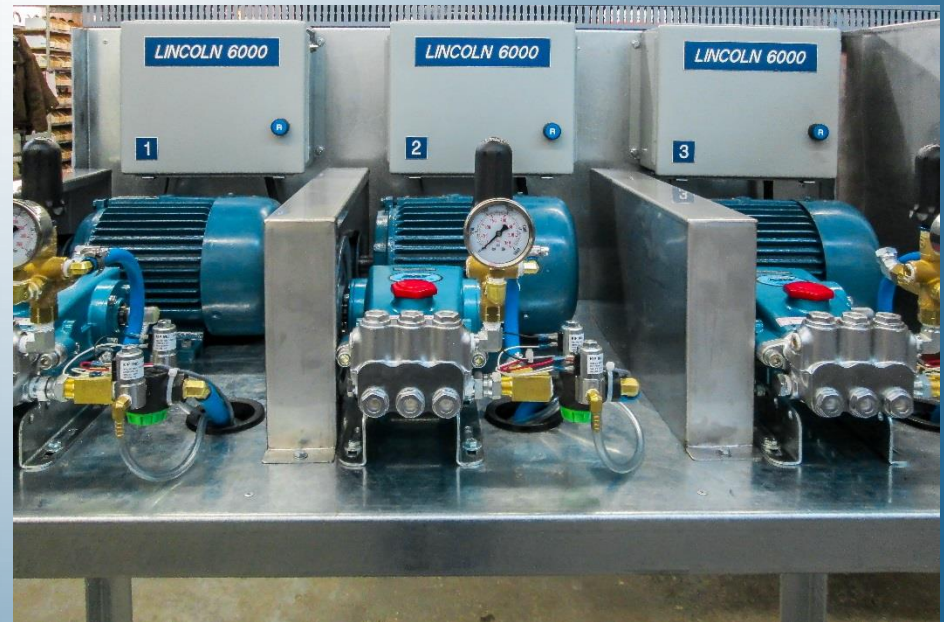
PUMP STAND



- Sturdy, heavy duty aluminum frame
- Built according to number of bays
- Service friendly and long lasting

LINCOLN SERIES

PUMP STAND



- General 2011 High Pressure Pump
- Cat 530 High Pressure Pump
- Stainless steel 1/4" 24 VAC solenoids (Wax, Soap etc.)
- WFI Filter bowl
- High pressure adjustable unloader with gauge

LINCOLN SERIES

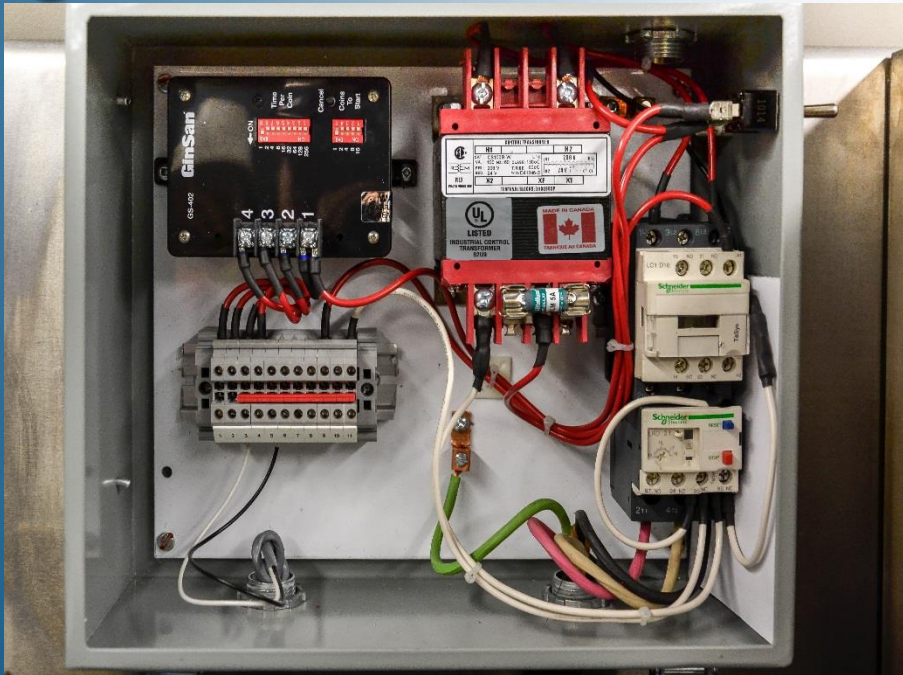
PUMP STAND



- Stainless steel belt guards
- Heavy duty TEFC 5HP or 7.5 HP motors
- 3 phase or single phase
- Heavy duty pulleys, bushings and belts

LINCOLN SERIES

CONTROL BOX



- ETL/QPS approved control box
- Contactor & overload, external reset
- 24 VAC transformer
- Reliable adjustable timer
- Fuse protected

LINCOLN SERIES

WATER AND CHEMICAL HOLDING TANKS



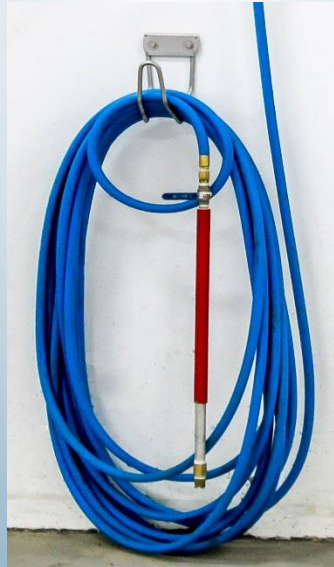
- Durable stainless steel construction
- Built to fit customer water and chemical requirements
- 1/2" shut-off valves
- 1/2" stainless steel in line ports

LINCOLN SERIES

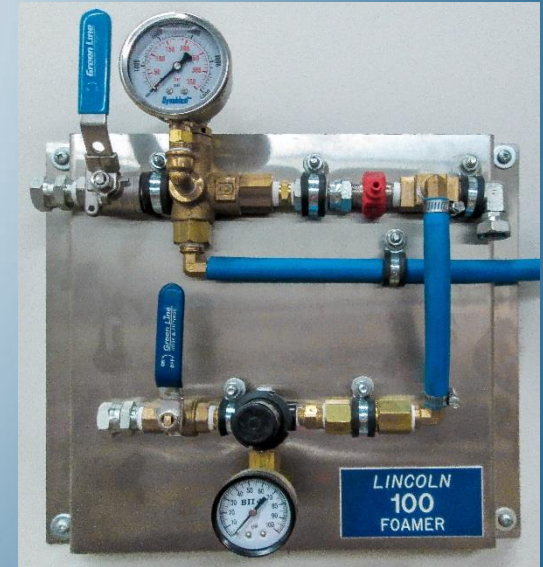
FOAMER SYSTEMS



- Thick foam & sprays 25 feet
- Air pump operated
- 511 chemical proportioner
- Stainless steel tank & panel
- Flow controlled at wand
- High pressure pump not required
- Air required
- City water line required



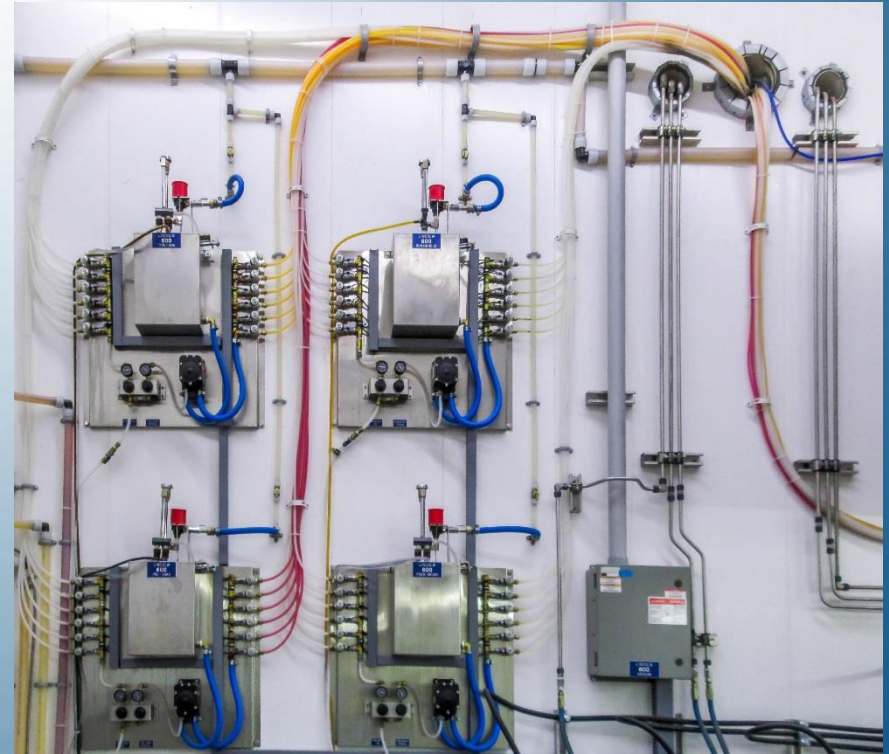
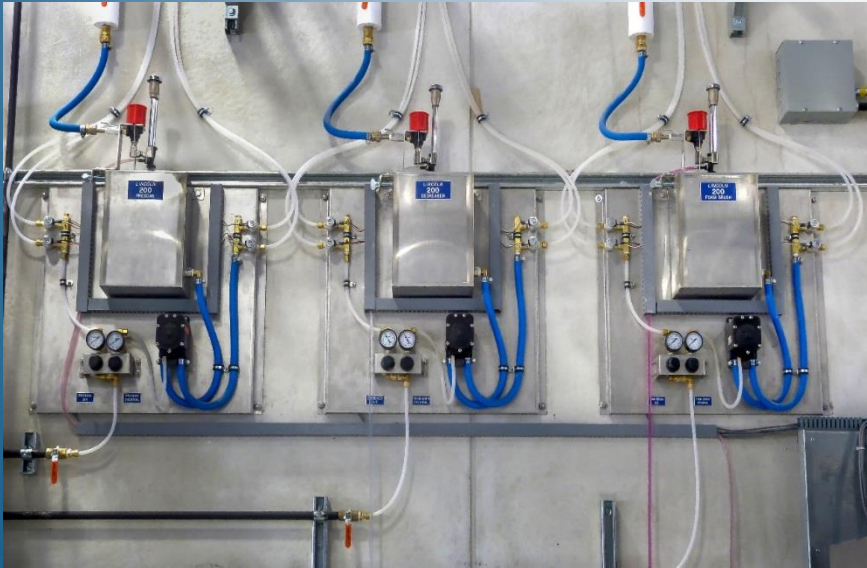
- Durable 75 foot ½" GP hose
- 3 foot aluminum wand
- Foamer nozzle
- Durable foamer swivel
- Stainless steel hose hanger



- Thick foam & sprays 25 feet
- Accurate chemical injector
- Adjustable unloader
- Stainless steel panel
- Flow controlled at panel
- Operates off of high pressure pump
- Air required

LINCOLN SERIES

LOW PRESSURE CHEMICAL PANELS



- Durable stainless steel construction
- Reliable air pumps require no power
- Custom built to accommodate number of bays
- Foam Brush, Tire/engine/bug, presoak, ICE
- Easy to adjust air and chemical regulators
- Automatic chemical proportioner

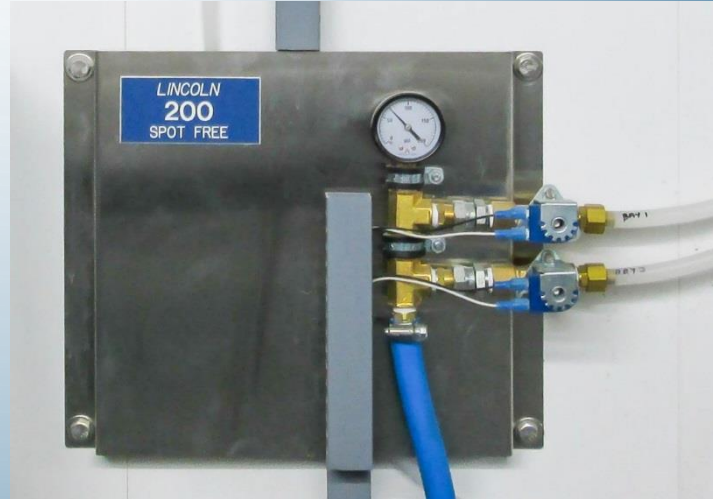
**LINCOLN
SERIES**

WATER TREATMENT SYSTEMS



LINCOLN SERIES

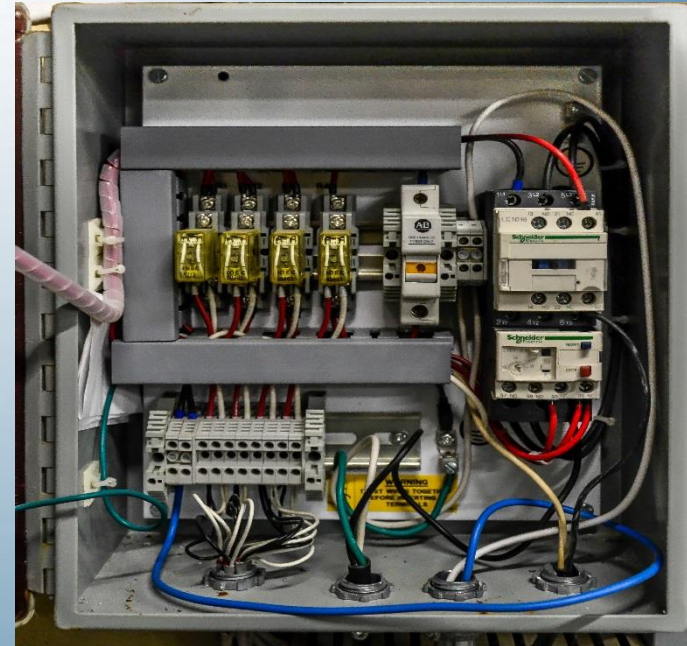
SPOT FREE PANELS AND DELIVERY



- Durable stainless steel construction
- 24 VAC solenoids
- Custom built to number of bays
- Maintenance free delivery pump
- 150 P.S.I. or 250 P.S.I. delivery pump

LINCOLN SERIES

SPOT FREE CONTROL BOX



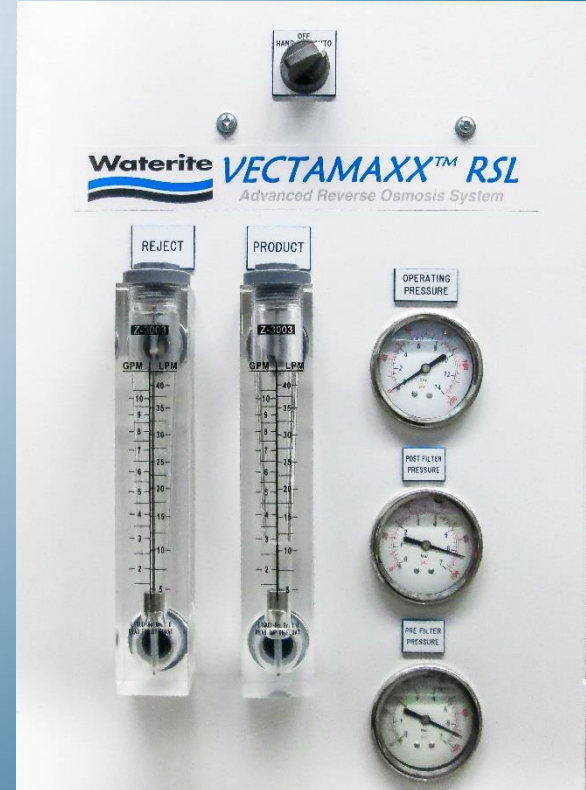
- ETL/QPS approved control box
- Contactor and overload
- 24 VAC relays
- Fuse protected

LINCOLN SERIES

SPOT FREE PRODUCTION



- Black Max ultra low energy membranes
- Acrylic flow meters
- Glycerine filled S.S. gauges
- Rigid powder coated steel frame
- Stainless steel membrane housings
- Low pressure safety shut-off
- Precision needle control valves
- Full flow pre-filter housing



LINCOLN SERIES

WATER SOFTENERS



- Simple economic electronic meter demand
- Sized according to soft water demand
- Easy to program and user friendly
- Salt settings in 1 lb. increments
- 12 Volt operation
- Specialty resins employ performance and leading technology
- Designed to use less water and less salt
- Runs quieter and lasts longer

LINCOLN SERIES

ON DEMAND HOT WATER



- Rinnai wall mount on demand water heater
- Natural Gas
- Push button temperature settings and controls



102 Paramount Rd.
Winnipeg, MB R2X 2W3
Office (204)-632-8002 Fax (204)-633-5455
www.dalincoln.com