

# LINCOLN SERIES

The background of the entire image is a gradient of blue, with numerous water droplets and bubbles of various sizes scattered throughout, creating a clean and fresh aesthetic.

**D.A. LINCOLN**  
**PUMP SERVICE & SUPPLY**  
**CAR & TRUCK WASH EXPERTS**

# LINCOLN SERIES



**The Lincoln Series Equipment** line covers a full range for the Self Serve Industry. Our customized industrial grade car/truck wash equipment offers standard systems for 1 to 12 bays, which can be expanded to fit any wash requirement. We use proven components to provide ultimate quality and reliability for years of trouble free operation.

**The Lincoln Series Wash Equipment** is designed with only one criteria:  
Make it the best self serve wash system possible



**D.A. LINCOLN**  
**PUMP SERVICE & SUPPLY**  
*CAR & TRUCK WASH EXPERTS*

# LINCOLN SERIES

## WAND BAY LAYOUTS





# LINCOLN SERIES

## CURTAIN/DIVIDERS

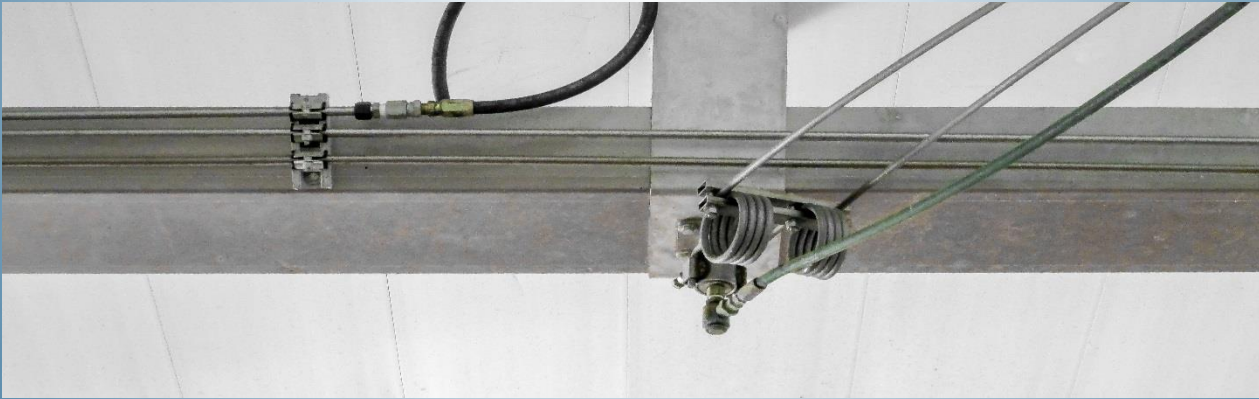


- PVC solid fabric
- Mildew and rot resistant
- Optional clear view panels to increase light and visibility
- Adjustable tension system
- Optional colours



# LINCOLN SERIES

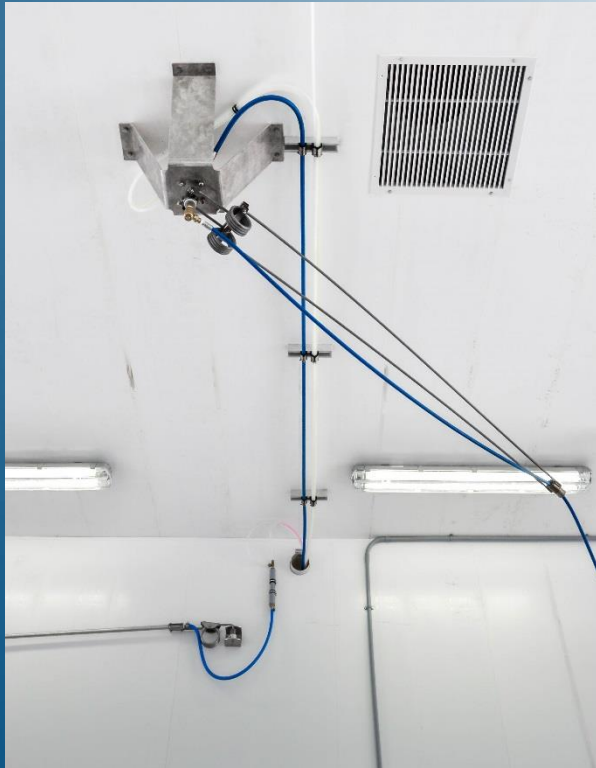
## OVERHEAD TRAY



- All aluminum fabricated
- Strong, sturdy and long lasting
- Tray sized according to number of bays
- Customizable hangers to fit your ceiling and door height
- Easy installation

# LINCOLN SERIES

## 360° STAINLESS STEEL HIGH PRESSURE BOOM



- Stainless steel fabricated
- Spring loaded
- Long lasting nylon bearing
- Stainless steel axel plate
- 3/8" HP swivel
- Durable and long lasting
- No grease points

# LINCOLN SERIES

## 180° STAINLESS STEEL LOW PRESSURE BOOM



- Stainless steel fabricated
- Spring loaded
- Aluminum flow through pipe
- Durable and long lasting



# LINCOLN SERIES

## MAT CLAMPS



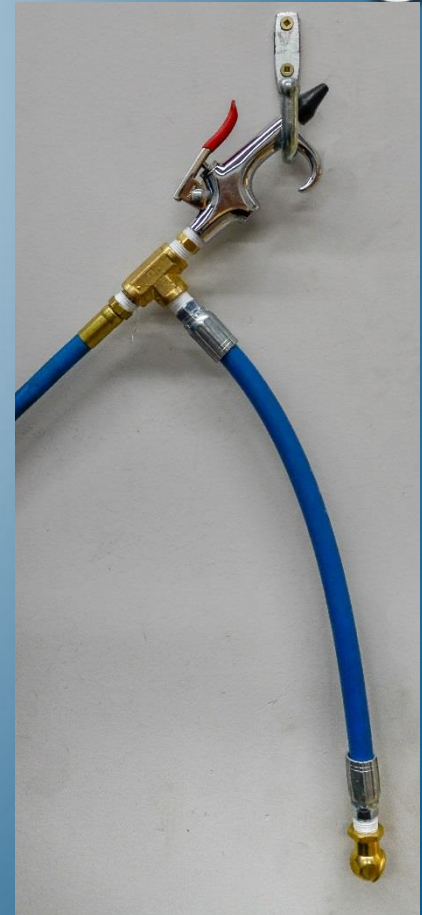
- Stainless steel fabricated
- Spring loaded
- Durable

# LINCOLN SERIES

## IN BAY EQUIPMENT



- Aluminum foam brush head with soft bristles, 6' aluminum handle with 3/8" swivel
- Durable shut off or weep HP gun with stainless steel wand and 3/8" HP swivel
- Durable air gun with scratch protector equipped with tire air chuck





# LINCOLN SERIES

## IN BAY EQUIPMENT HANGERS



- Stainless steel fabricated
- Durable
- Vacuum hose hanger
- Foam brush hanger



# LINCOLN SERIES

## IN BAY VACUUM SYSTEM



- 120 VAC/13amp vac motor
- Removable bucket for easy cleaning
- Durable housing
- No filter bags required
- Optional claws and swivels
- 1 1/2 " durable vac hose
- One central vacuum system available




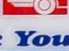
# LINCOLN SERIES

## INSTRUCTION SIGN

### WASHING INSTRUCTIONS

**WARNING**  
**CAUTION**

**HIGH PRESSURE** GRASP WAND FIRMLY  
IN HAND BEFORE USING.  
FLOOR MAY BE SLIPPERY WHEN WET

<b>VACUUM</b>		Turn selector knob to <b>VACUUM</b> . Remove excess litter from vehicle. <b>DRY VACUUM ONLY!</b>
<b>TIRE CLEANER</b>		Turn selector knob to <b>TIRE CLEANER</b> . Soak dry tires with low pressure chemical then rinse.
<b>ENGINE CLEANER</b>		Turn selector knob to <b>ENGINE CLEANER</b> . Soak engine with low pressure chemical then rinse.
<b>BUG PREP</b>		Turn selector knob to <b>BUG PREP</b> . Apply low pressure chemical to surface area with bugs before soap application.
<b>SOAP</b>		Turn selector knob to <b>SOAP</b> . Wash vehicle with high pressure soap from bottom up.
<b>FOAM BRUSH</b>		Check brush for cleanliness. Turn selector knob to <b>FOAM BRUSH</b> . Use brush gently. Scrub entire vehicle. Return brush to holder.
<b>HOT RINSE</b>		Turn selector knob to <b>HOT RINSE</b> . Rinse from top to bottom.
<b>TURTLE WAX</b>		Turn selector knob to <b>TURTLE WAX</b> . Apply to entire vehicle. Rinse off excess wax.
<b>SPOT FREE RINSE</b>		Turn selector knob to <b>SPOT FREE RINSE</b> . Apply low pressure spot free rinse to entire vehicle as last application.
<b>AIR</b>		Turn selector knob to <b>AIR</b> . Blow excess water from doors and locks to avoid freezing. Use air chuck to inflate tires.

**Thank You for your business**  
**PLEASE COME AGAIN!**  
D.A. LINCOLN PUMP SERVICE and SUPPLY  
WINNIPEG, MANITOBA  
WWW.DALINCOLN.COM

- Graphic Lexan Wash Instruction Sign
- Customizable to customer options
- Durable and easy to follow
- Can include customer logo/name



# LINCOLN SERIES

## D.A. Easy Pay

- Features stand alone Payment Module
- Accepts Credit Cards, Interac/Debit, Gift/Fleet Cards, Mobile Payments and Key Fobs
- No Internet or Communication Cable Required
- Operates off Cellular data
- Counts up - Open Transaction (No more Beat the Clock!)
- Double your Revenue
- Electronic Receipt
- Web Based Reporting
- Low Transaction Fees
- LED Display Timer
- Your Carwash Logo on the face plate
- Water Resistant Stainless Steel housing
- Available with 12 Position Rotary Switch or Touch Screen
- Electronic Coin Acceptor, Accepts multiple coins
- D.A. Easy change switch selection decals



**D.A. PREMIUM PAYMENT  
STATION**

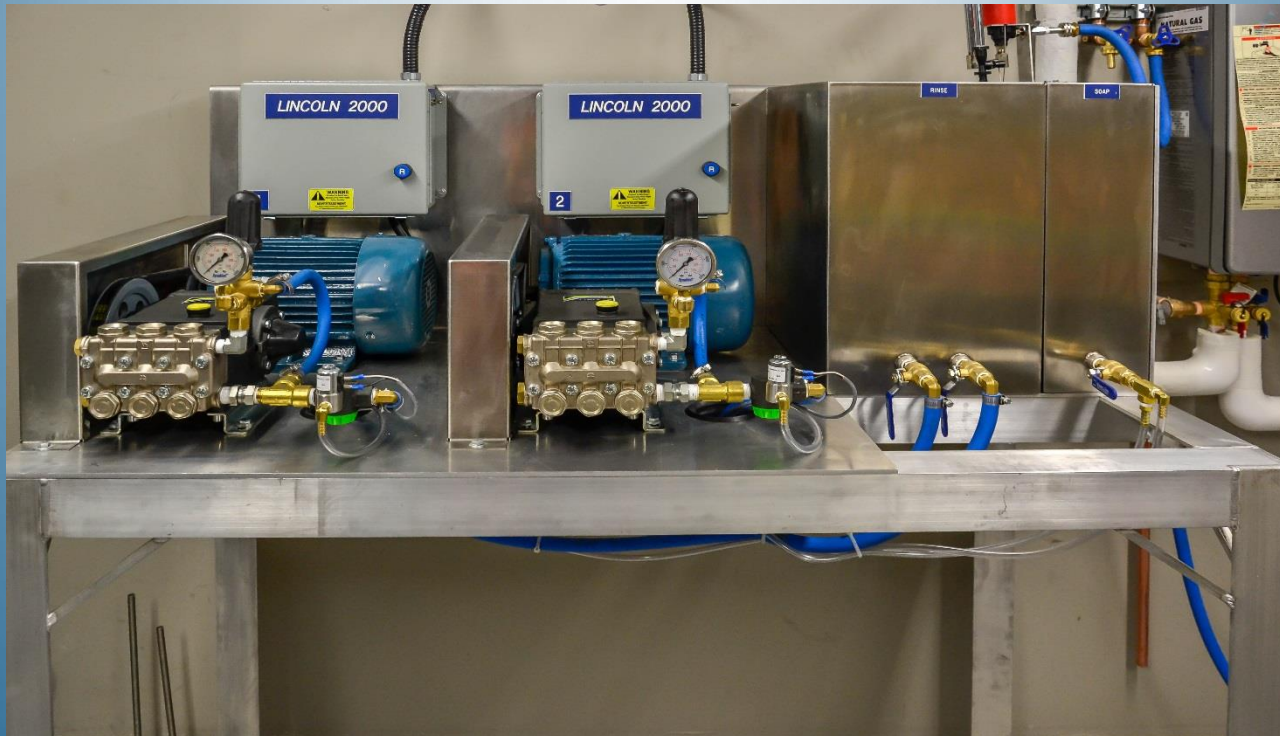


**D.A. RETRO PAYMENT  
STATION**



# LINCOLN SERIES

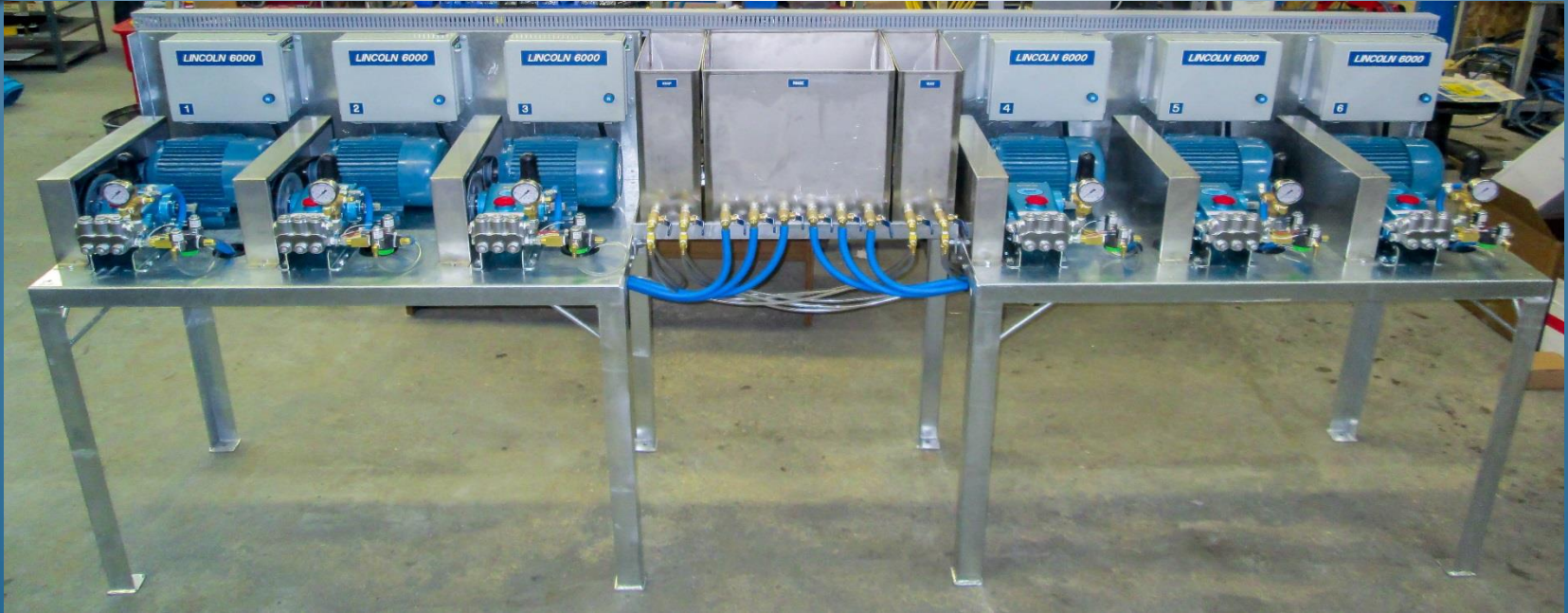
## PUMP STAND



- Sturdy, heavy duty aluminum frame
- Built according to number of bays
- Service friendly and long lasting

# LINCOLN SERIES

## PUMP STAND



- Sturdy, heavy duty aluminum frame
- Built according to number of bays
- Service friendly and long lasting



# LINCOLN SERIES

## PUMP STAND



- General 2011 High Pressure Pump
- Cat 310 High Pressure Pump
- Stainless steel 1/4" 24 VAC solenoids (Wax, Soap etc.)
- WFI Filter bowl
- High pressure adjustable unloader with gauge



# LINCOLN SERIES

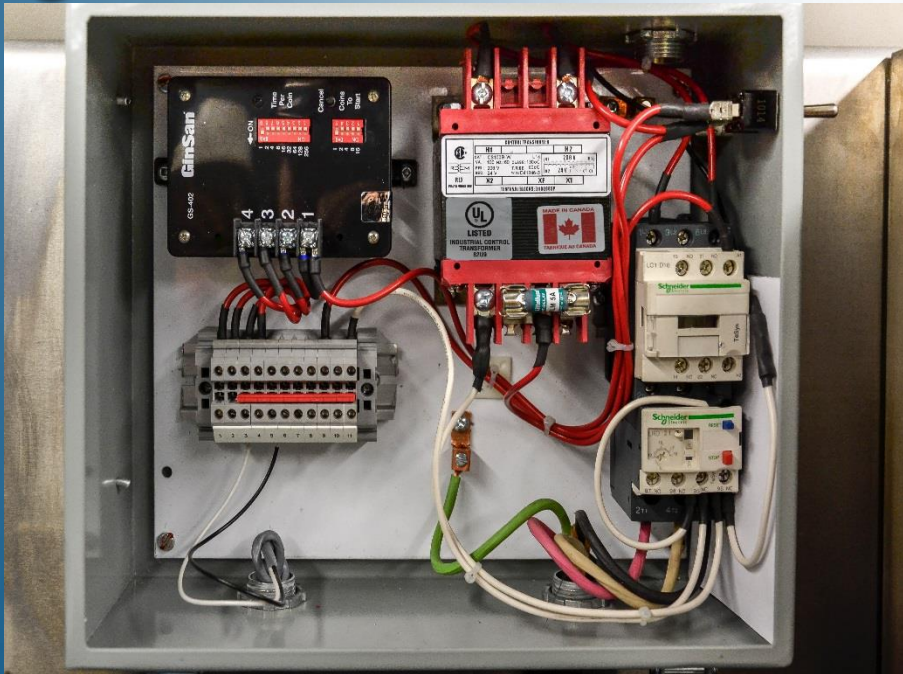
## PUMP STAND



- Stainless steel belt guards
- Heavy duty TEFC 5HP motors
- 3 phase or single phase
- Heavy duty pulleys, bushings and belts

# LINCOLN SERIES

## CONTROL BOX



- ETL/QPS approved control box
- Contactor & overload, external reset
- 24 VAC transformer
- Reliable adjustable timer
- Fuse protected



# LINCOLN SERIES

## WATER AND CHEMICAL HOLDING TANKS

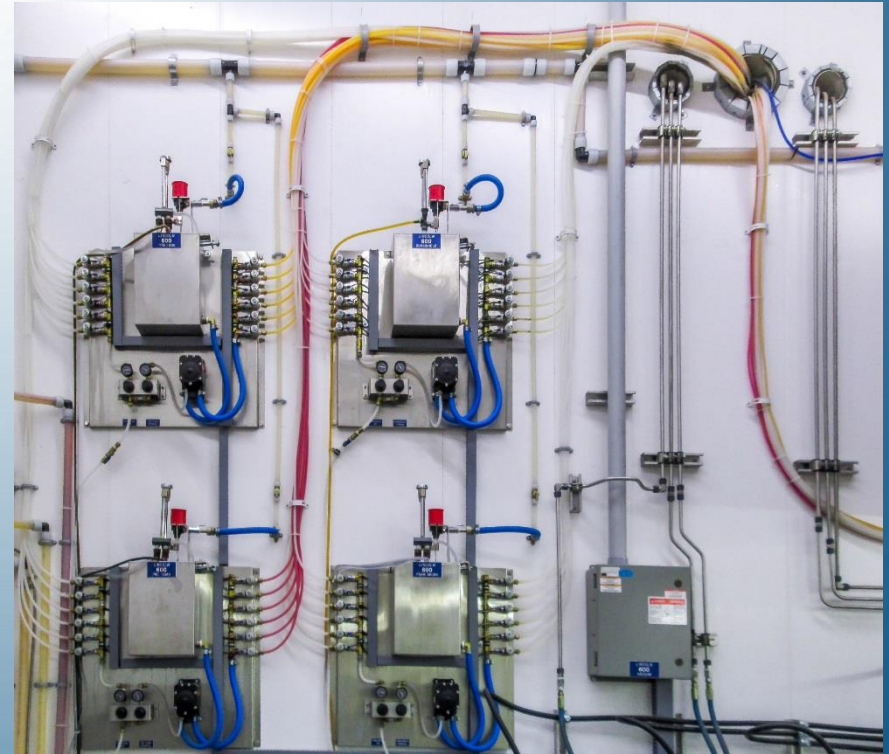
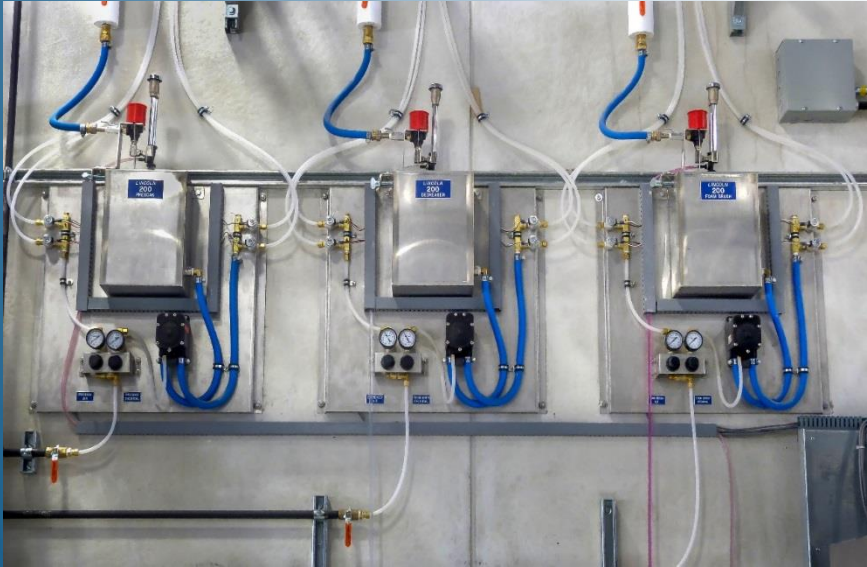


- Durable stainless steel construction
- Built to fit customer water and chemical requirements
- 1/2" shut-off valves
- 1/2" stainless steel in line ports



# LINCOLN SERIES

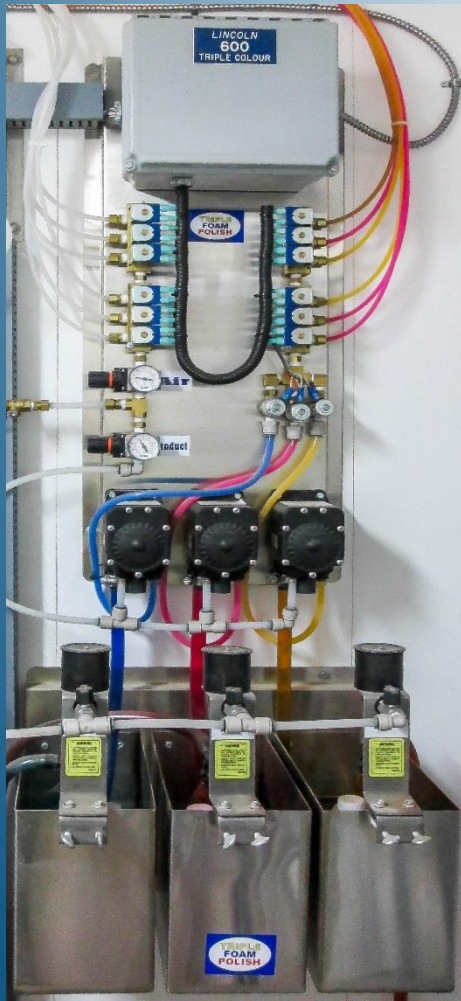
## LOW PRESSURE CHEMICAL PANELS



- Durable stainless steel construction
- Reliable air pumps require no power
- Custom built to accommodate number of bays
- Foam Brush, Tire/engine/bug, presoak, ICE
- Easy to adjust air and chemical regulators
- Automatic chemical proportioner

# LINCOLN SERIES

## TRIPLE SPRAY FOAM SYSTEM



- 3 colour & fragmatic conditioning spray foam
- Reliable air pumps require no power
- Stainless steel panel and chemical tanks
- Automatic chemical proportioners
- Electrical enclosure with controls
- 1 – 12 Bays capability



# LINCOLN SERIES

## WATER TREATMENT SYSTEMS



# LINCOLN SERIES

## SPOT FREE PANELS AND DELIVERY



- Durable stainless steel construction
- 24 VAC solenoids
- Custom built to number of bays
- Maintenance free delivery pump
- 150 P.S.I. or 250 P.S.I. delivery pump



# LINCOLN SERIES

## SPOT FREE CONTROL BOX



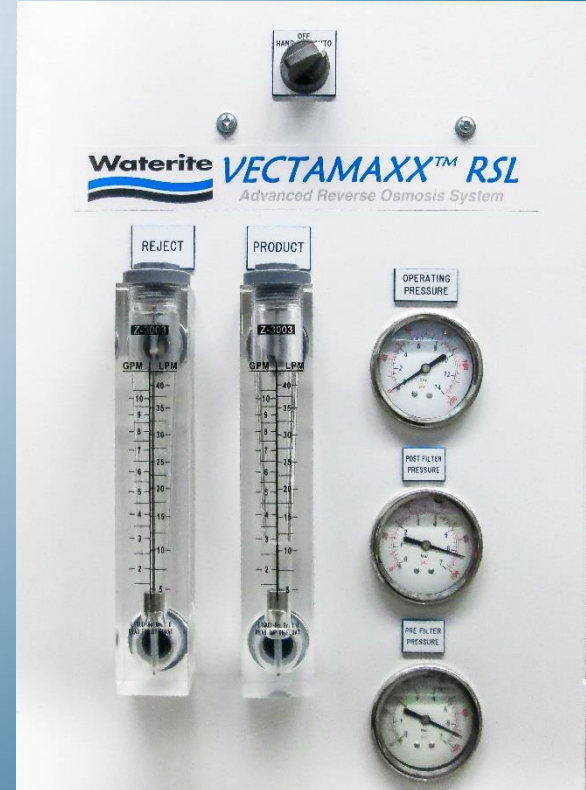
- ETL/QPS approved control box
- Contactor and overload
- 24 VAC relays
- Fuse protected

# LINCOLN SERIES

## SPOT FREE PRODUCTION



- Black Max ultra low energy membranes
- Acrylic flow meters
- Glycerine filled S.S. gauges
- Rigid powder coated steel frame
- Stainless steel membrane housings
- Low pressure safety shut-off
- Precision needle control valves
- Full flow pre-filter housing





# LINCOLN SERIES

## WATER SOFTENERS



- Simple economic electronic meter demand
- Sized according to soft water demand
- Easy to program and user friendly
- Salt settings in 1 lb. increments
- 12 Volt operation
- Specialty resins employ performance and leading technology
- Designed to use less water and less salt
- Runs quieter and lasts longer

# LINCOLN SERIES

## ON DEMAND HOT WATER

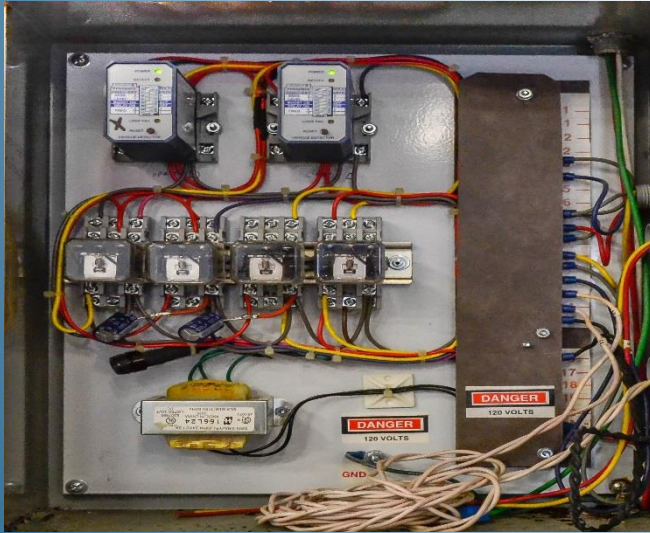


- Rinnai wall mount on demand water heater
- Natural Gas
- Push button temperature settings and controls



# LINCOLN SERIES

## WAND BAY ENTRY SYSTEM



- Dependable gate with motor driven arm
- 4 stage relay system with safety
- 4 premade PVC loops, no saw cuts
- Loop detectors
- Reliable bay counter
- Bays full sign
- Electrically approved



102 Paramount Rd.  
Winnipeg, MB R2X 2W3  
Office (204)-632-8002 Fax (204)-633-5455  
[www.dalincn.com](http://www.dalincn.com)